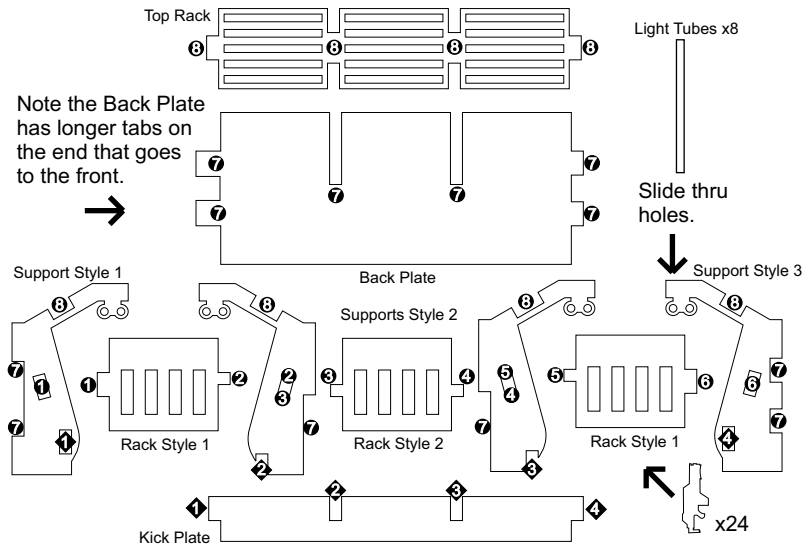


ARMOURY

ARMOURY ASSEMBLY DIAGRAMS

Each diagram shows the individual parts for the Armoury. Assemble the parts in order according to the numbered symbols. The placement of the symbols show where the parts match up together.

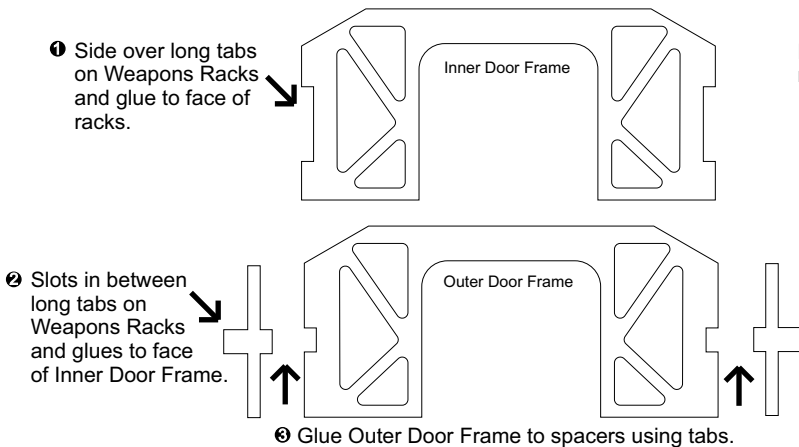
Weapons Rack Sub-Assembly x2



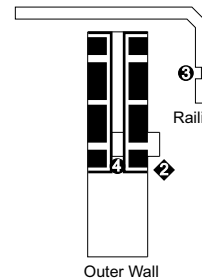
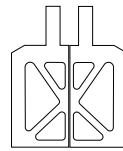
The fit of these parts will be snug. You might have to jockey parts around some or partially separate the last parts you assembled to get the next one in place.

BUILD THE 2ND RACK AS A MIRROR IMAGE OF THE FIRST!

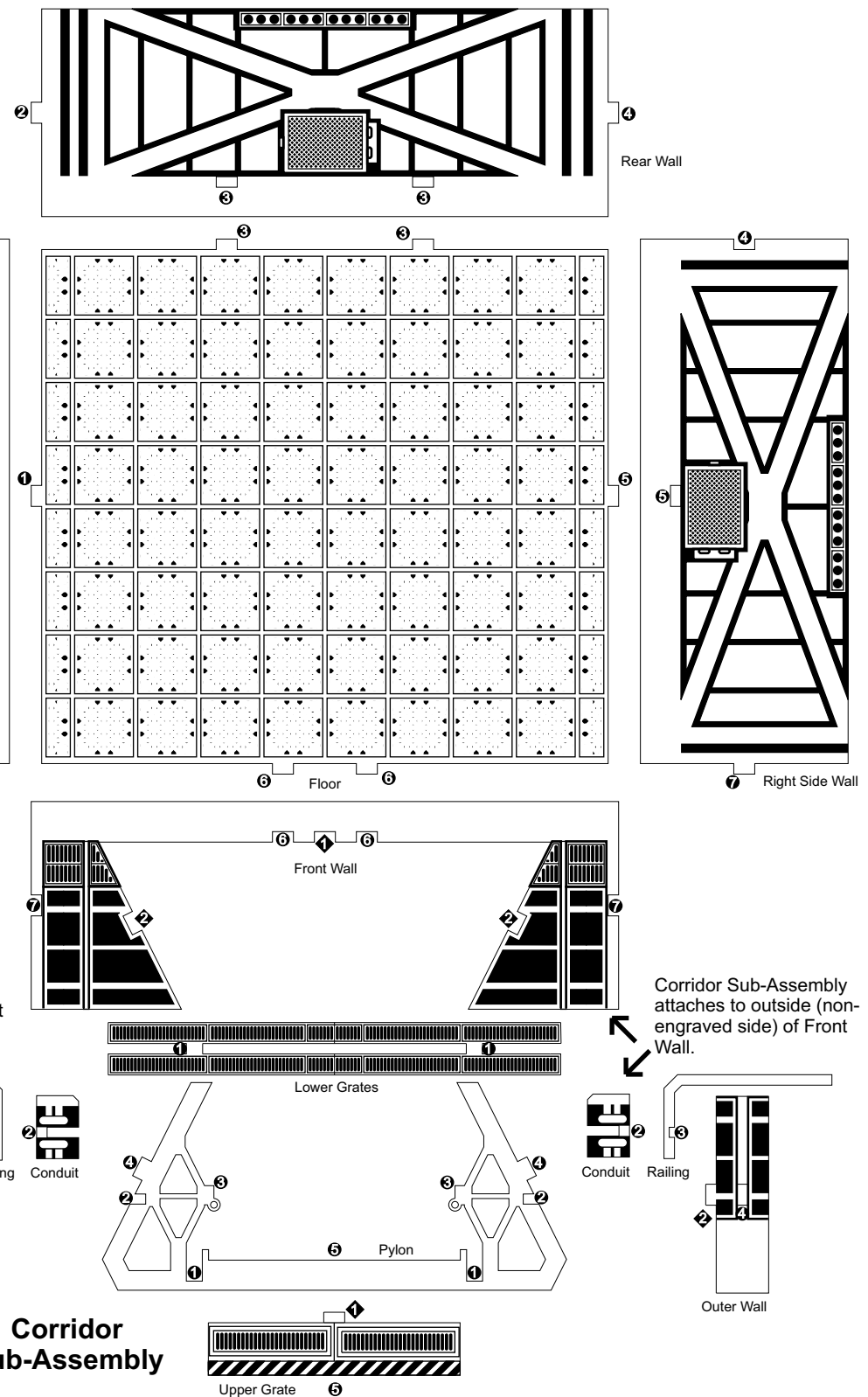
When the two completed racks are facing each other the long tabs on the Back Plates should be facing the same direction. These are the anchor points for the Door Assembly.



Door slides freely in the slot made by the spacers.

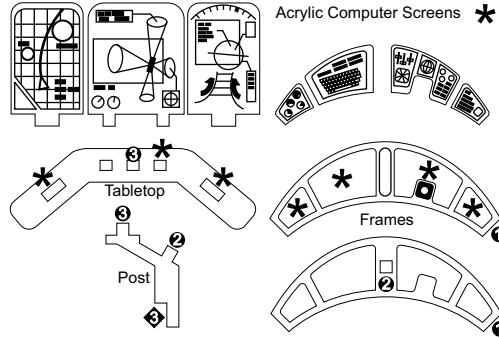


Corridor Sub-Assembly



BRIDGE ASSEMBLY DIAGRAMS

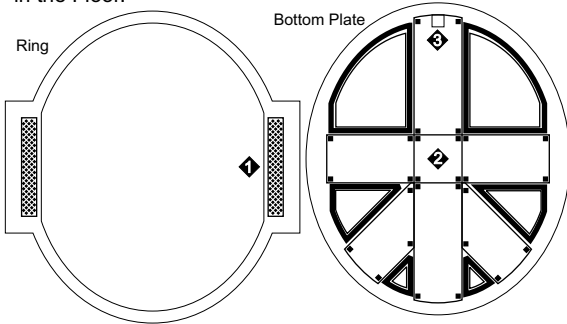
Each diagram shows the individual parts for the Bridge. Assemble the parts in order according to the numbered symbols. The placement of the symbols show where the parts match up together.



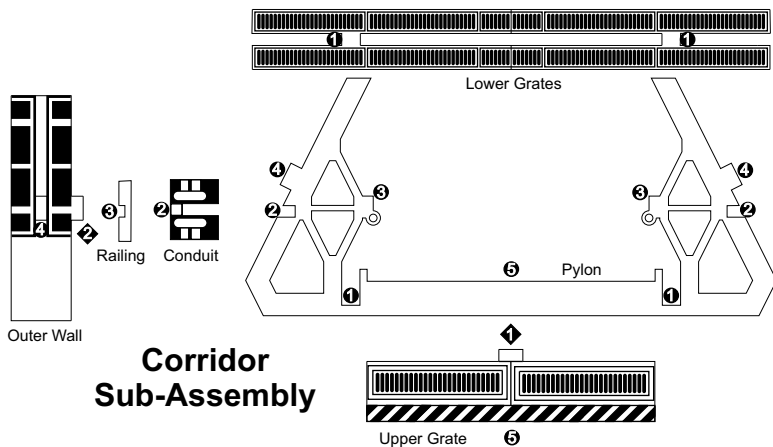
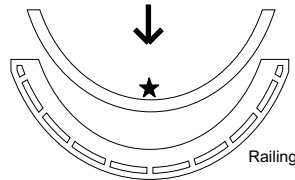
Control Desk Sub-Assembly

Glue Frame without engraved details to back of one with. Openings are slightly smaller in back Frame.

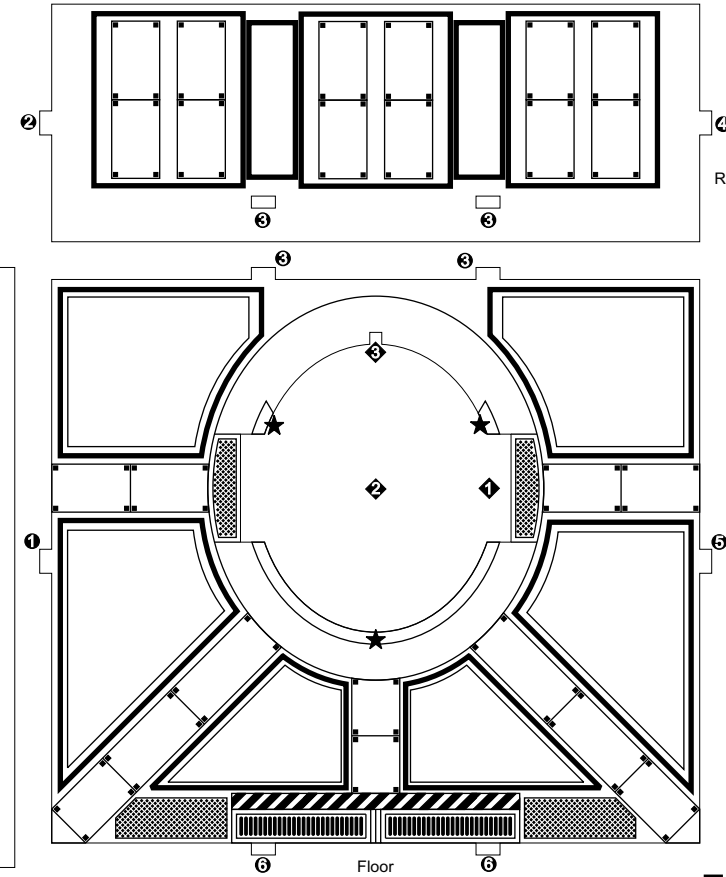
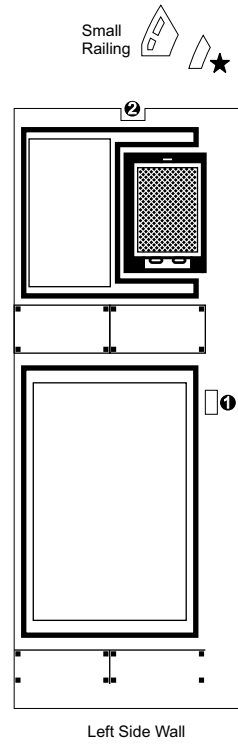
Step 1 glue the Ring to the bottom side of the Floor, aligning it with the opening. Step 2 glue the Bottom Plate to the Ring. Note the placement of the hole in the Plate and align it carefully to the notch in the Floor. Step 3 glue the Post of the Control Desk into the hole in the Bottom Plate and notch in the Floor.



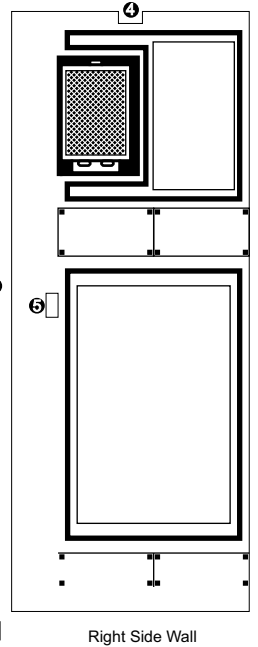
Glue to engraved outline on Floor and then Railing on top of that.



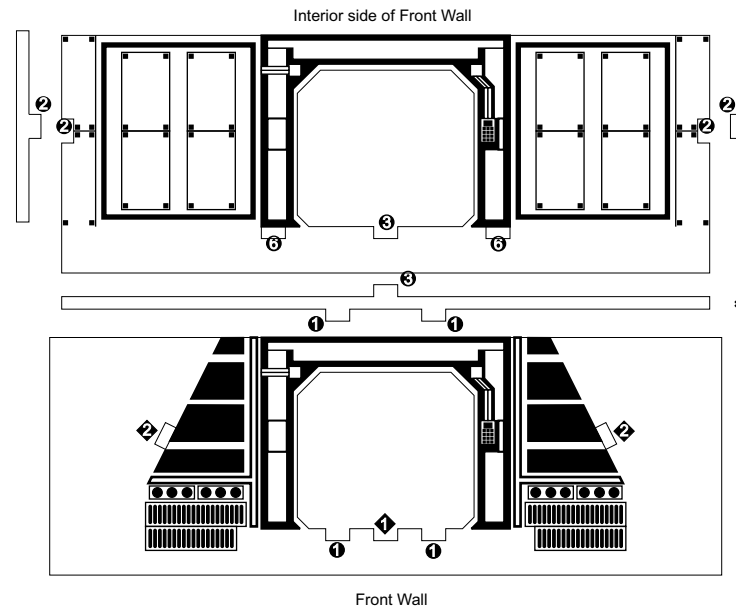
BRIDGE



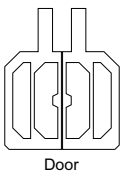
Glue to engraved outline on Floor and then Railing on top of that. (Both sides)



The assembled Front Wall attaches inside the overhang portion of the Side Walls.



Attach spacers to inside (non-engraved side) of Front Wall pieces. Front Wall pieces go together so that the engraved sides face out.

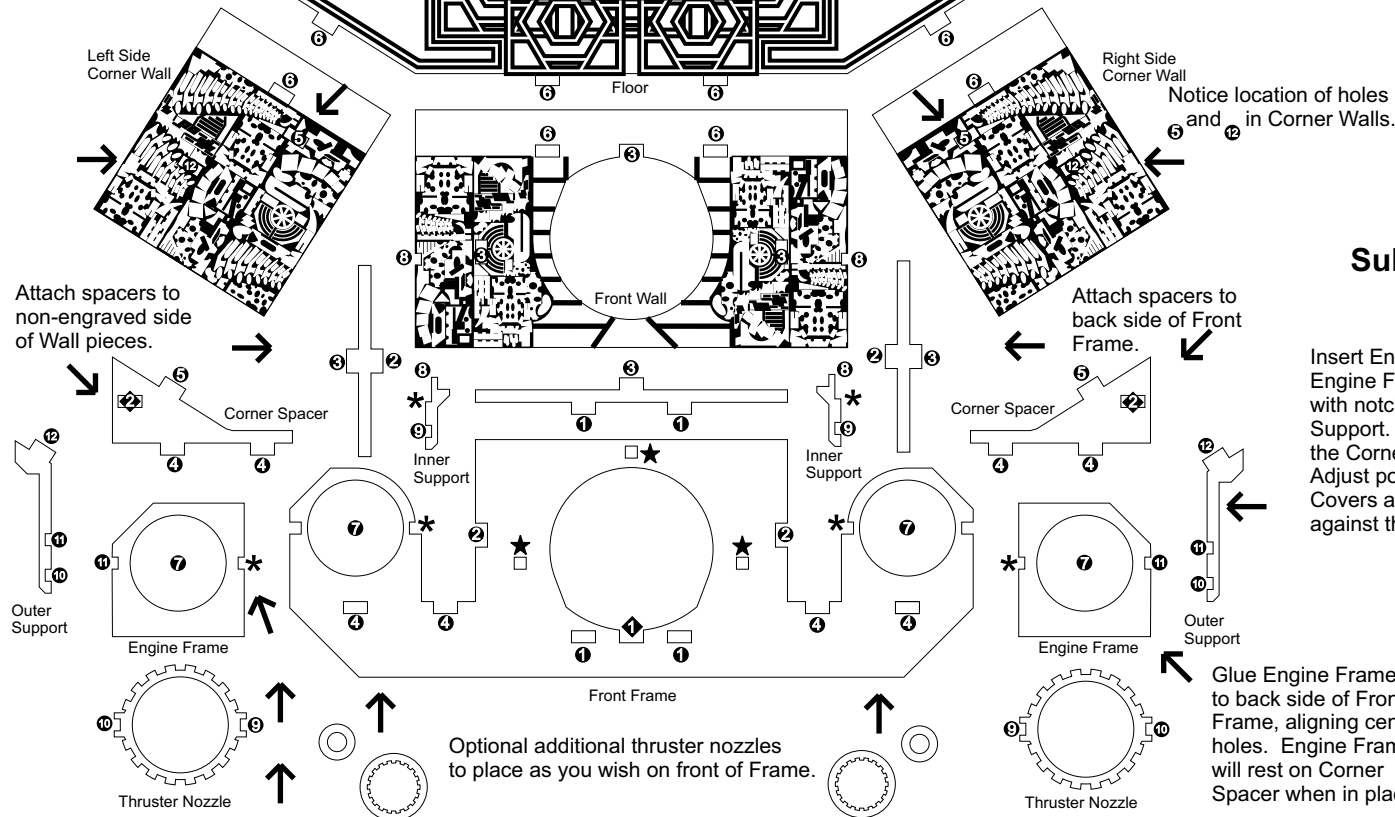


Door slides freely in the slot made by the spacers.



BUG HUNTER'S SHIP

Engine Covers should be flush against the edge of the Front Frame at the front and flush against the Corner Wall at the back. Glue Control Fins in place at desired angle. Notice slightly wider Fins at corners. Repeat as a mirror image on other side.

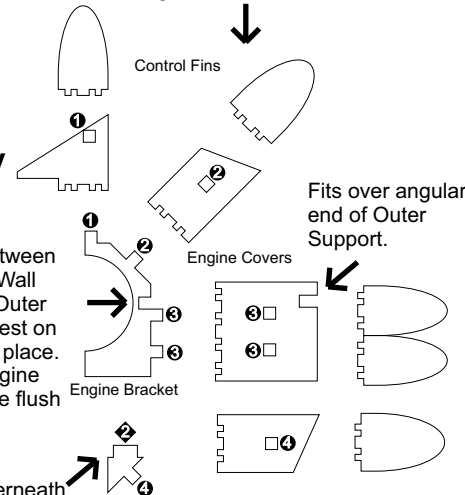


Engine Sub-Assembly x2

DO FIRST!

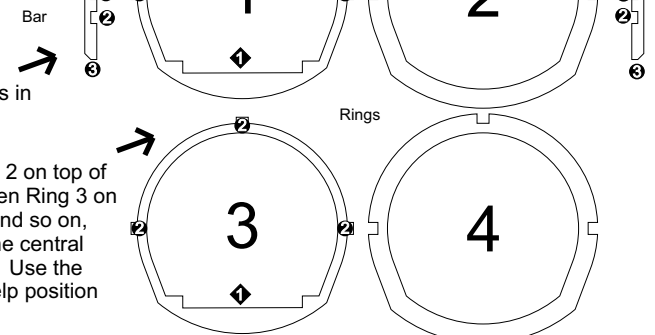
Insert Engine Bracket in between Engine Frame and Corner Wall with notch in Bracket over Outer Support. The Bracket will rest on the Corner Spacer when in place. Adjust position so when Engine Covers are in place they are flush against the Corner Wall.

Glue underneath Corner Spacer.



Ship Sub-Assembly

Front of Bar (⑧) passed through holes in Front Wall. Back of Bar (★) attaches to holes in Ship Assembly.

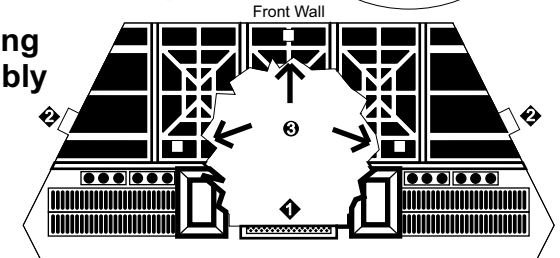
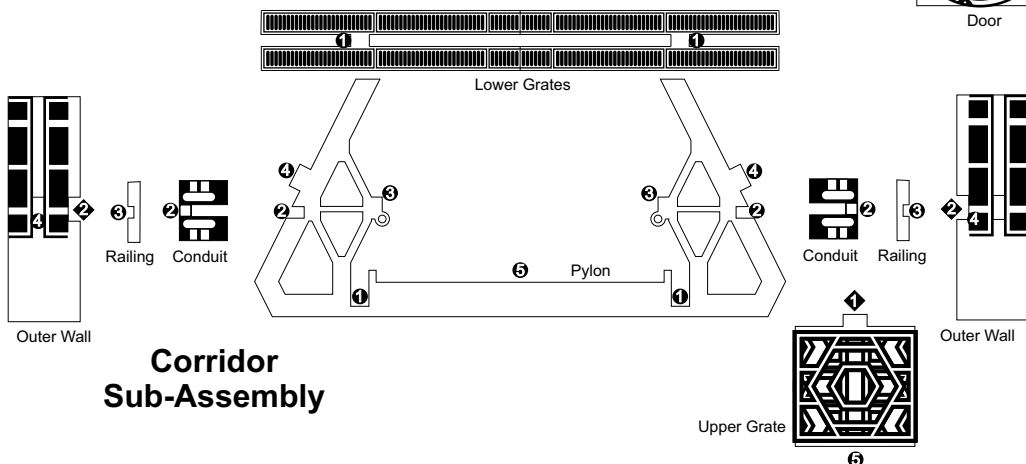


Glue Ring 2 on top of Ring 1, then Ring 3 on top of 2, and so on, aligning the central openings. Use the Bars to help position correctly.

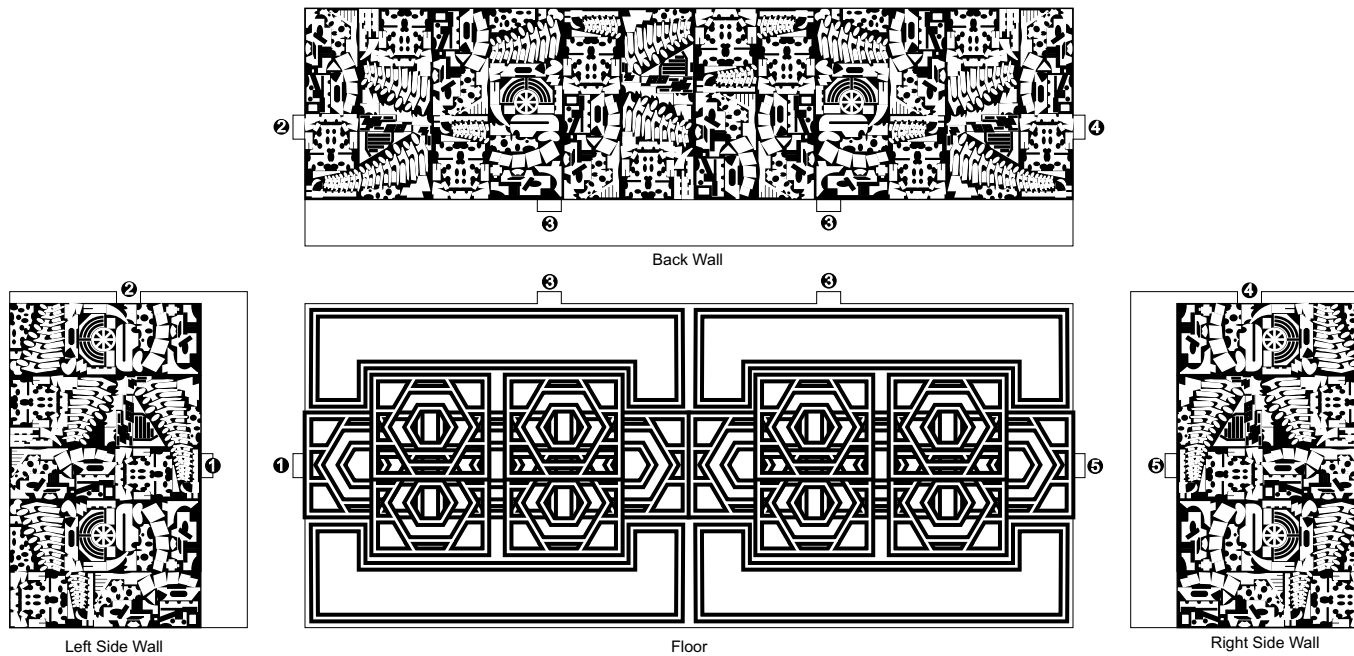
Docking Ring Sub-Assembly

Upper Grate rests in slots in Front Wall and Rings, with tab (④) in groove of Ship Assembly.

Corridor Sub-Assembly



BUG HUNTER'S SHIP BACK SECTION

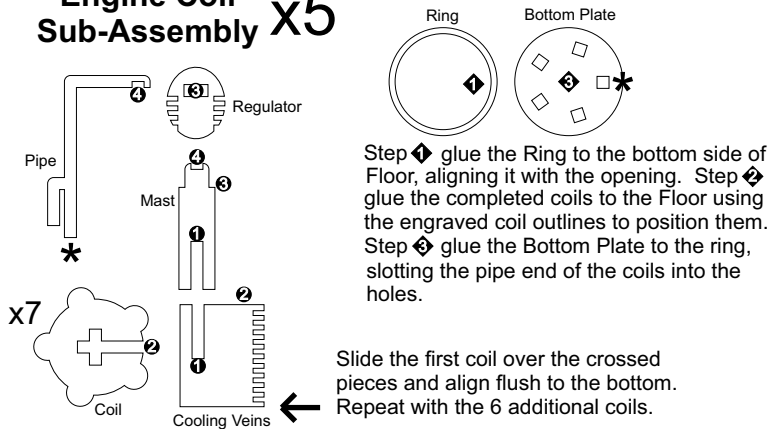


ENGINE ROOM

ENGINE ROOM ASSEMBLY DIAGRAMS

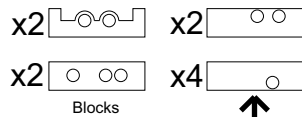
Each diagram shows the individual parts for the Engine Room. Assemble the parts in order according to the numbered symbols. The placement of the symbols show where the parts match up together.

Engine Coil Sub-Assembly x5



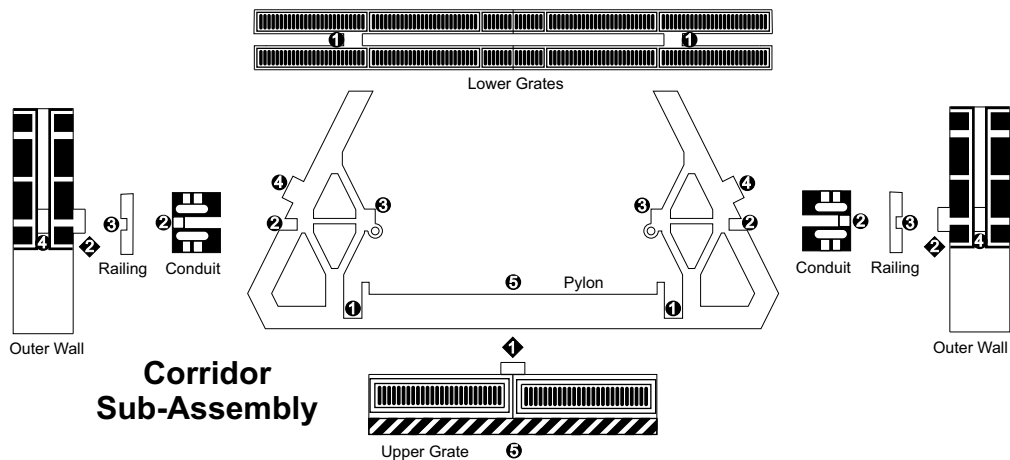
Engine Pipe Assembly

Select a pair of dowel rod blocks and insert the rods into them. Next glue the blocks to the bottom of the Floor such that the dowel rods are visible through the openings. Place them as you wish to achieve the look you like best.

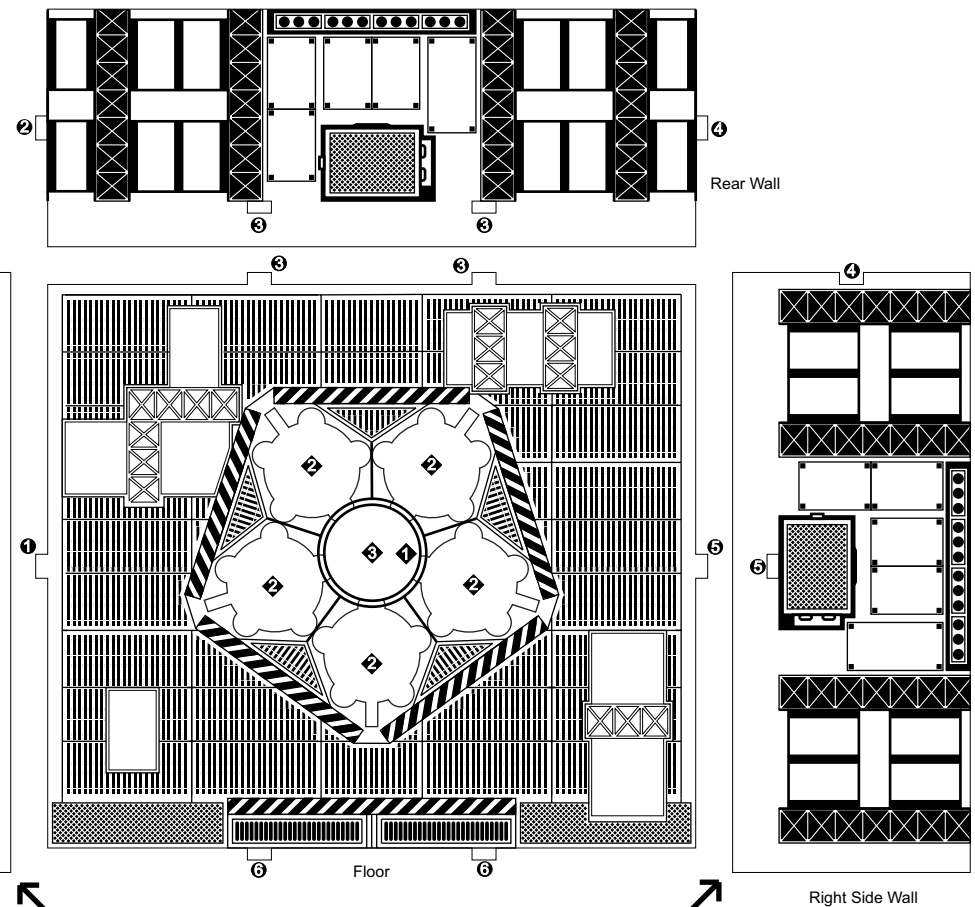


Use these 2 styles in tandem to make pipes that cross over each other.

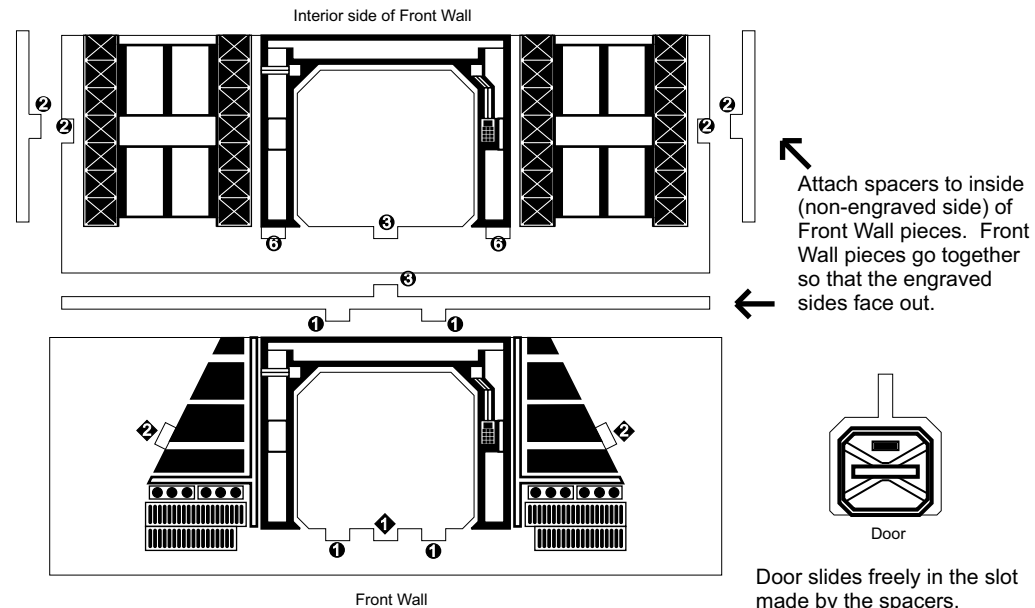
Dowel Rod x9



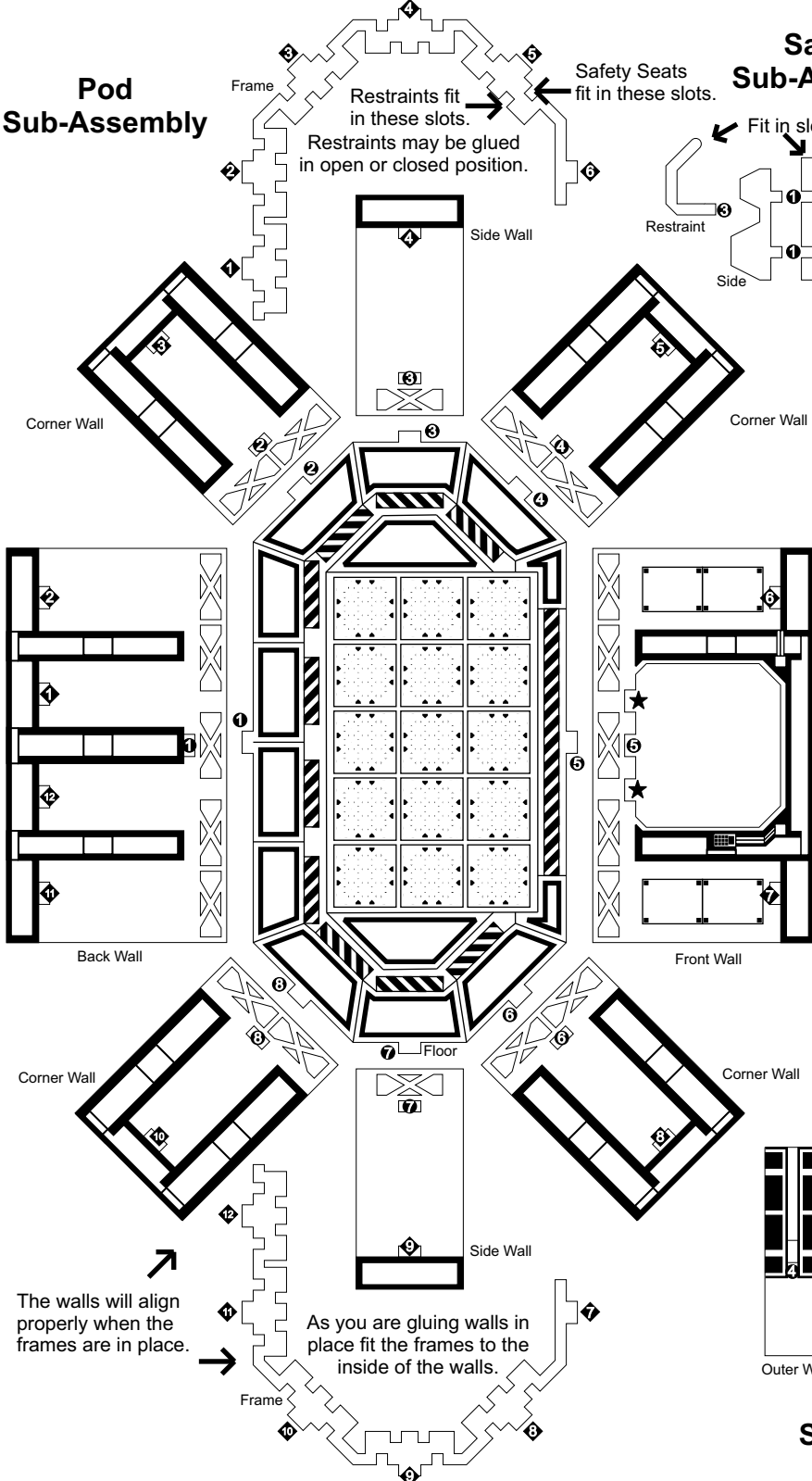
Corridor Sub-Assembly



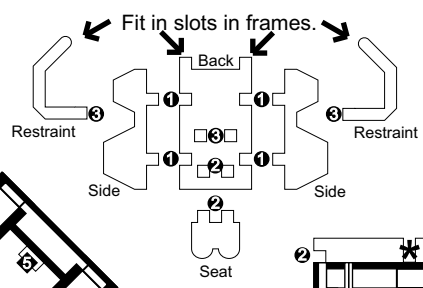
The assembled Front Wall attaches inside the overhang portion of the Side Walls.



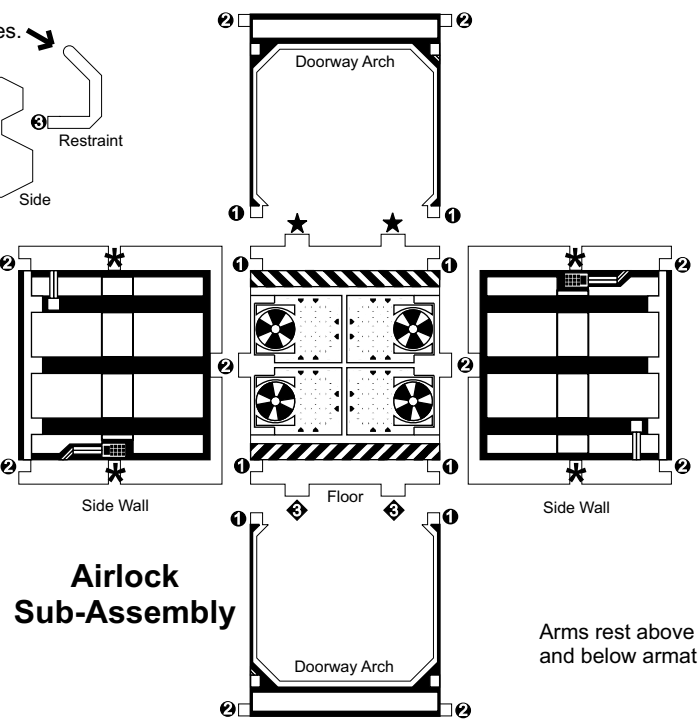
Pod Sub-Assembly



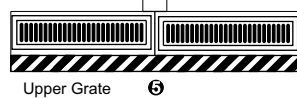
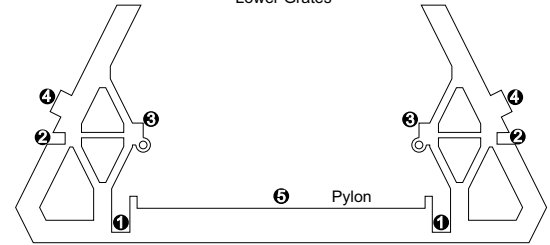
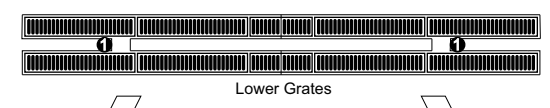
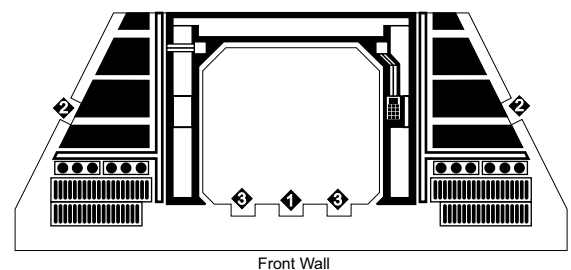
Safety Seat Sub-Assembly x10



ESCAPE POD

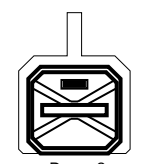
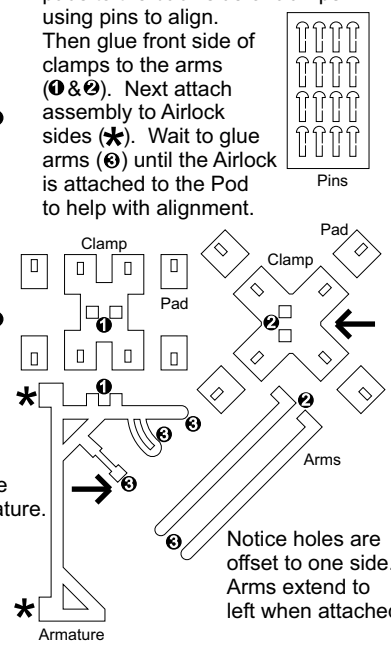


Airlock Sub-Assembly



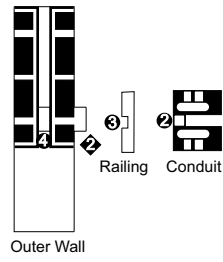
Restraining Clamp Sub-Assembly x2

Cut the pins from the sprue with a sharp knife and pass through holes in clamps from the front side. Glue pads to the back side of clamps using pins to align. Then glue front side of clamps to the arms (1 & 2). Next attach assembly to Airlock sides (*). Wait to glue arms (3) until the Airlock is attached to the Pod to help with alignment.

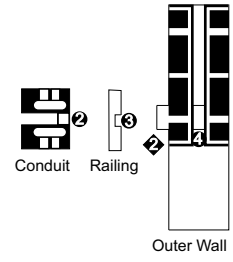


Doors slide freely between Doorway Arches and Walls.

The Corridor Sub-Assembly attaches to engraved side of the Front Wall, the Airlock Sub-Assembly to the other.



Corridor Sub-Assembly

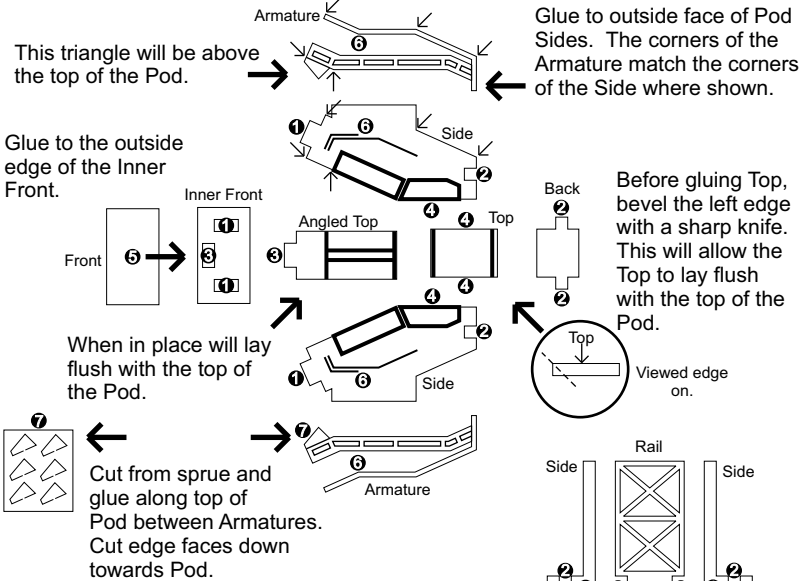


HIBERNATION ROOM

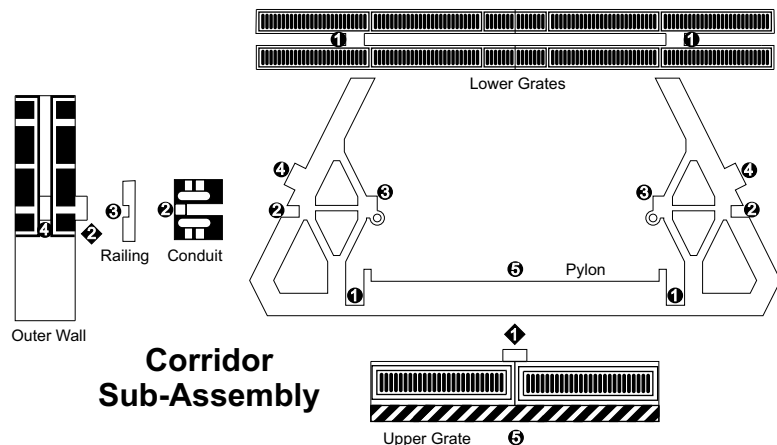
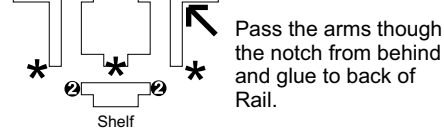
HIBERNATION ROOM ASSEMBLY DIAGRAMS

Each diagram shows the individual parts for the Hibernation Room. Assemble the parts in order according to the numbered symbols. The placement of the symbols show where the parts match up together.

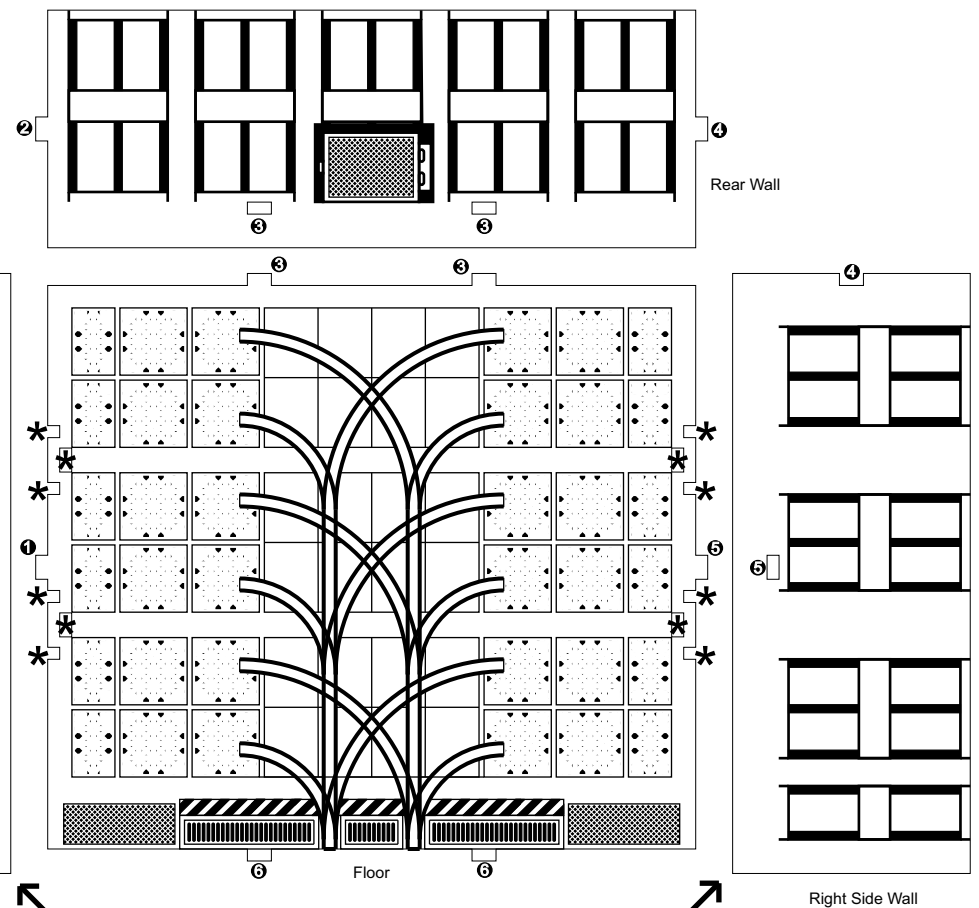
Sleep Pod Sub-Assembly x6



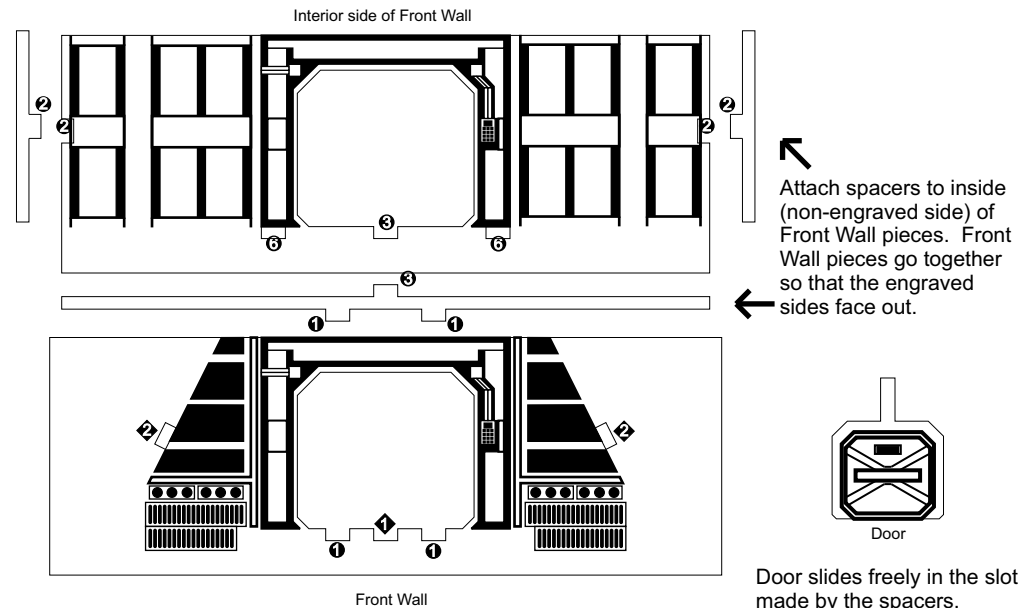
Support Rail Sub-Assembly x4



Corridor Sub-Assembly



The assembled Front Wall attaches inside the overhang portion of the Side Walls.

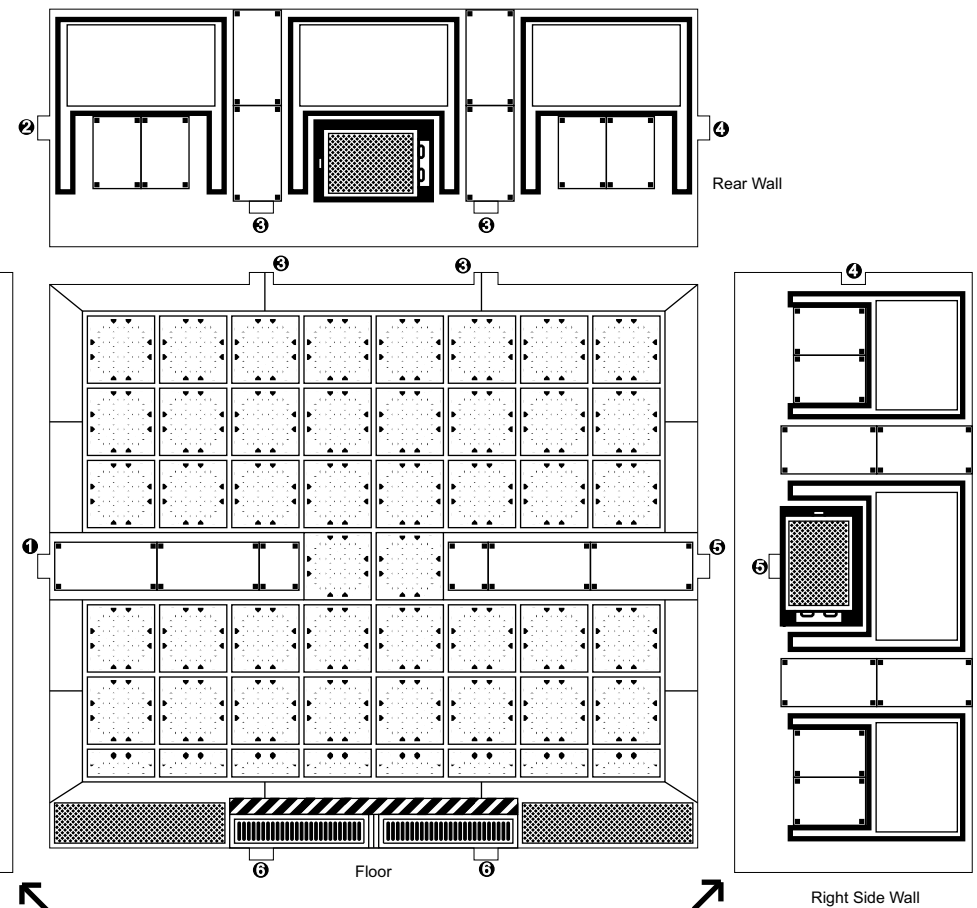
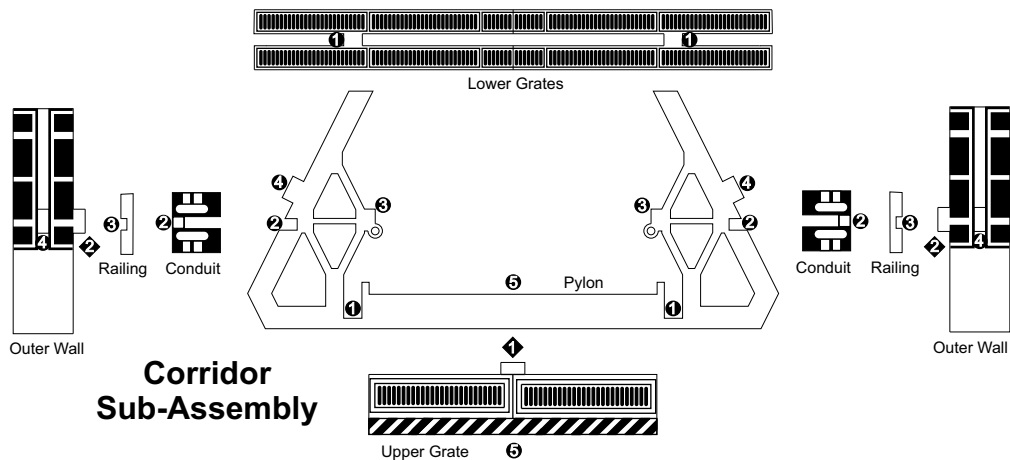
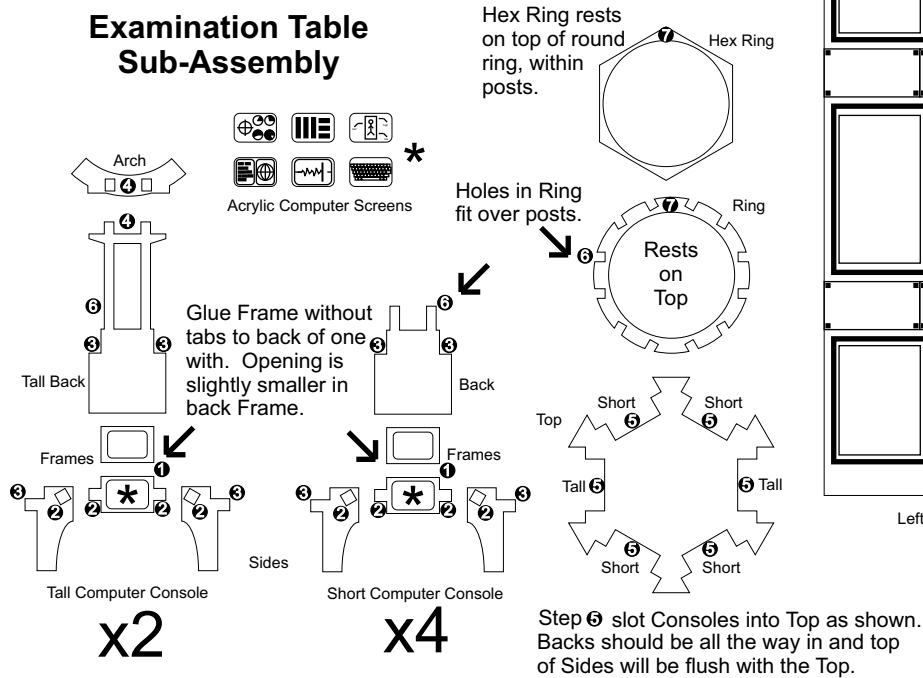


LABORATORY

LABORATORY ASSEMBLY DIAGRAMS

Each diagram shows the individual parts for the Laboratory. Assemble the parts in order according to the numbered symbols. The placement of the symbols show where the parts match up together.

Examination Table Sub-Assembly



The assembled Front Wall attaches inside the overhang portion of the Side Walls.

